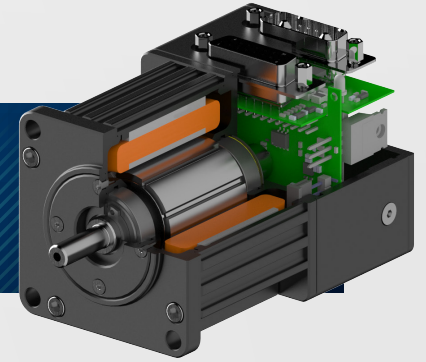


POWER & CONTROL WITH SEAMLESS INTEGRATION

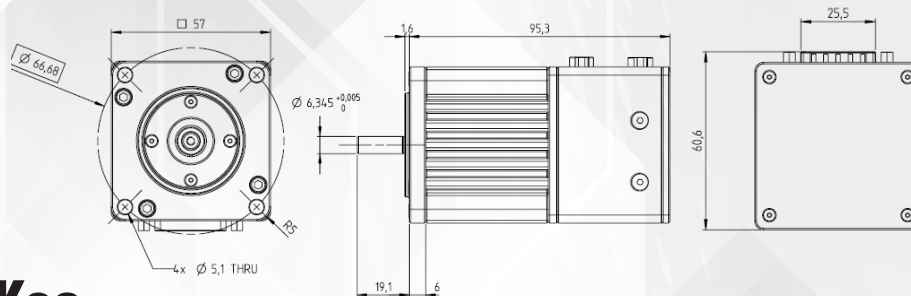
A compact, all-in-one motor system with a built-in driver that simplifies installation and operation. This motor eliminates the need for external motor drivers, reducing wiring complexity and enhancing system efficiency. It offers advanced control features like speed, position, and torque monitoring, and multiple communication interfaces such as CAN and RS485. Designed for harsh environments, it includes features such as thermal management, real-time monitoring



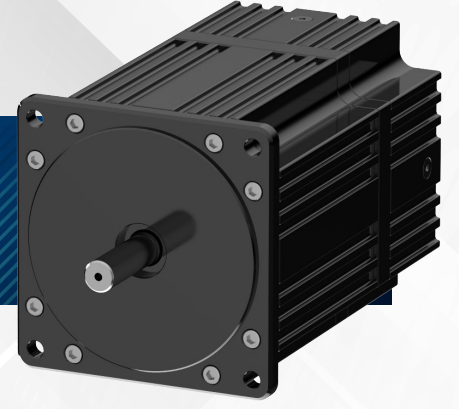
200W DRIVER INTEGRATED SERVO MOTOR

PRODUCT FEATURES

Electrical Parameters	Main Input Voltage	12V-48V
	Rated Power	226W
	No Load Speed	8100rpm
	Continuous Current	6Arms
	Continuous Torque	0.33Nm
	Peak Torque	0.57Nm
	Voltage Constant	6.13V/kRPM
	Inductance	0.4mH
Control Modes and Command Type	Control Mode	Position, Speed, Torque
	Position Command Type	Internal Position Command
	Speed Command Type	Internal Speed Command
	Torque Command Type	Internal Torque Command
Control and Communication	Communication	CAN, RS485
	Control	Trapezoidal Control
	Encoder Resolution	2048
AI/AO	DI/DO	2/-
	AI/AO	-/-
Protection and Security	Protection	Short Circuit, Over Temperature, Over Voltage, Under Voltage, Feedback Error, Over Current
Size and Environmental Conditions Strength	Operating Temperature [°C]	-0°C to +85°C
	Storage Temperature [°C]	-20 °C to +85°C
	Dimension [H x W x L] [mm]	57mm x 57mm x 95.3mm
	Weight [kg]	0.8 kg

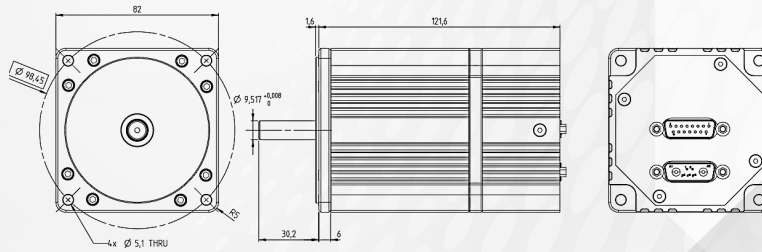


400W DRIVER INTEGRATED SERVO MOTOR



PRODUCT FEATURES

Electrical Parameters	Main Input Voltage	12V-48V
	Rated Power	400W
	No Load Speed	8100rpm
	Continuous Current	10.3Arms
	Continuous Torque	1.2Nm
	Peak Torque	3.9Nm
	Voltage Constant	12.1V/kRPM
	Inductance	0.49mH
Control Modes and Command Type	Control Mode	Position, Speed, Torque
	Position Command Type	Internal Position Command
	Speed Command Type	Internal Speed Command
Control and Communication	Torque Command Type	Internal Torque Command
	Communication	CAN, RS485
	Control	Trapezoidal Control
AI/AO	Encoder Resolution	2048
	DI/DO	2/-
Protection and Security	AI/AO	-/-
	Protection	Short Circuit, Over Temperature, Over Voltage, Under Voltage, Feedback Error, Over Current
Size and Environmental Conditions Strength	Operating Temperature [°C]	-0°C to +85°C
	Storage Temperature [°C]	-20 °C to +85°C
	Dimension [H x W x L] [mm]	82mm x 82mm x 121.6mm
	Weight [kg]	1.4 kg



WAT MOTOR SANAYİ ve TİCARET A.Ş.
KARAAĞAÇ MAHALLESİ 8. SOKAK NO: 4 A/2
KAPAKLI 59510 TEKİRDAĞ, TÜRKİYE

SALES OFFICE
ÜNALAN MAHALLESİ AYAZMA SOKAK ÇAMLICA İŞ MERKEZİ
B2 BLOK NO: 29 KAT: 3 34700 ÜSKÜDAR, İSTANBUL, TÜRKİYE

WAT TEKNOPARK OFFICE
Sanayi, Teknopark Blv 10C Blok
Kat:2, 34912 Pendik/İstanbul

CALL CENTER
+90 850 399 4 928
wat.com.tr | sales@wat.com.tr